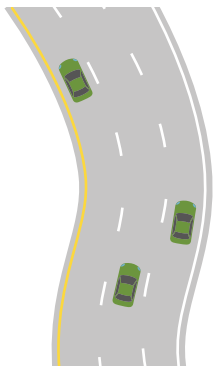


I-30/I-40 SAFETY EXISTING CONDITIONS



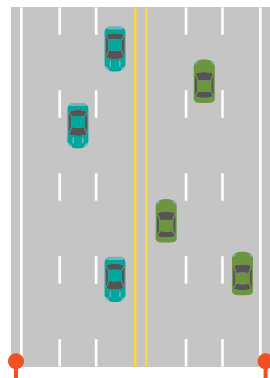
CURVES

8 Deficient Locations
Curves do not meet design standards



SHOULDERS

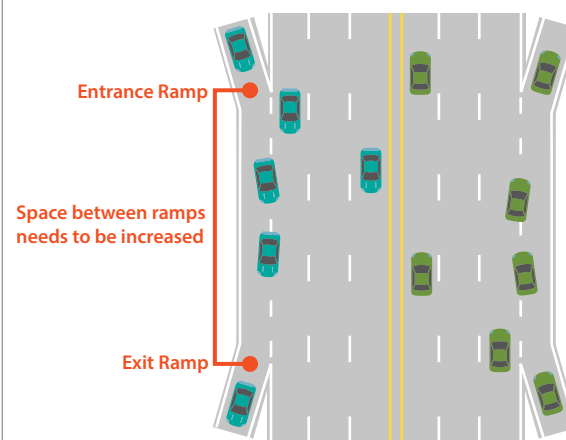
9 Deficient Locations
Inadequate shoulder widths



Existing shoulders range from 1-6 ft wide and proposed widths are 10 ft or greater

RAMP SPACING

11 Deficient Locations
Lack of required spacing to safely allow weaving between entrance/exit ramps



PROPOSED ALTERNATIVES

All safety deficiencies are corrected except for the following:

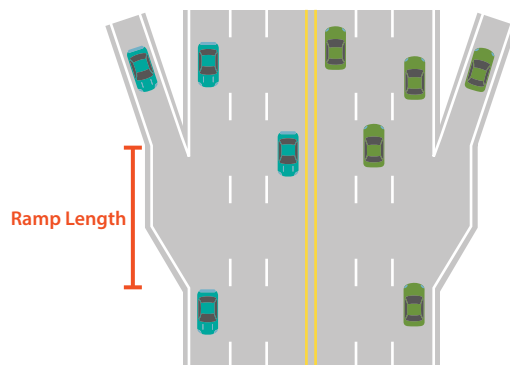
Ramp Spacing for the Study Corridor

	Alternative Includes Single-Point Urban Interchange (SPUI) at Cantrell Rd.	Alternative Includes Split Diamond at Cantrell Rd.
Improved but still less than desirable		
8-Lane	8	4
6-Lane ¹	6	4

¹The 6-lane alternative provides a Collector-Distributor (CD) Road which allows ramp movements to occur on a slower speed facility.

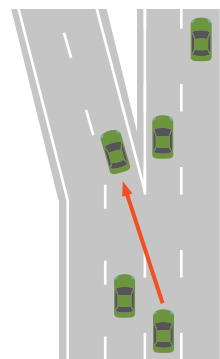
RAMP LENGTH

15 Deficient Locations
Ramps lack recommended lengths



LEFT EXITS

2 Deficient Locations
Left exits on I-40 cause significant weaving issues



RIVER NAVIGATION

1 Deficient Location
Pier obstructions in navigational channel under I-30

