

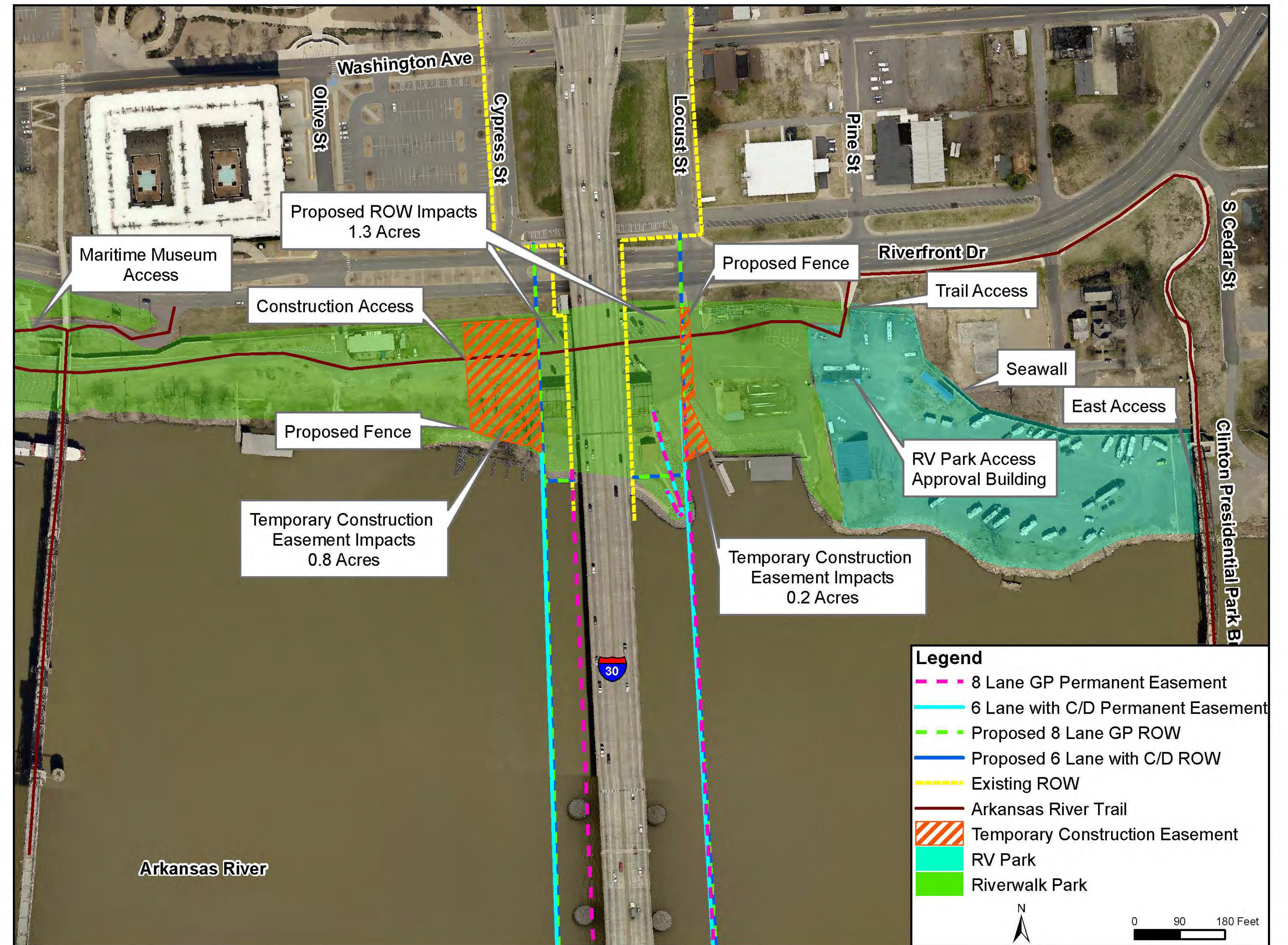
ENVIRONMENTAL IMPACTS



WILLIAM J. CLINTON PRESIDENTIAL CENTER AND PARK & JULIUS BRECKLING RIVERFRONT PARK



NORTH SHORE RIVERWALK PARK



No permanent impacts to the parks.

LOCUST STREET OVERPASS



The existing North Locust Street overpass is structurally deficient. Various options were evaluated, but demolition and replacement was determined to be the only feasible and prudent alternative. The Federal Highway Administration will ensure documentation of the bridge, including color digital photography, completion of an Arkansas Architectural Resource Form, and creation of a digital three-dimensional model for the bridge.