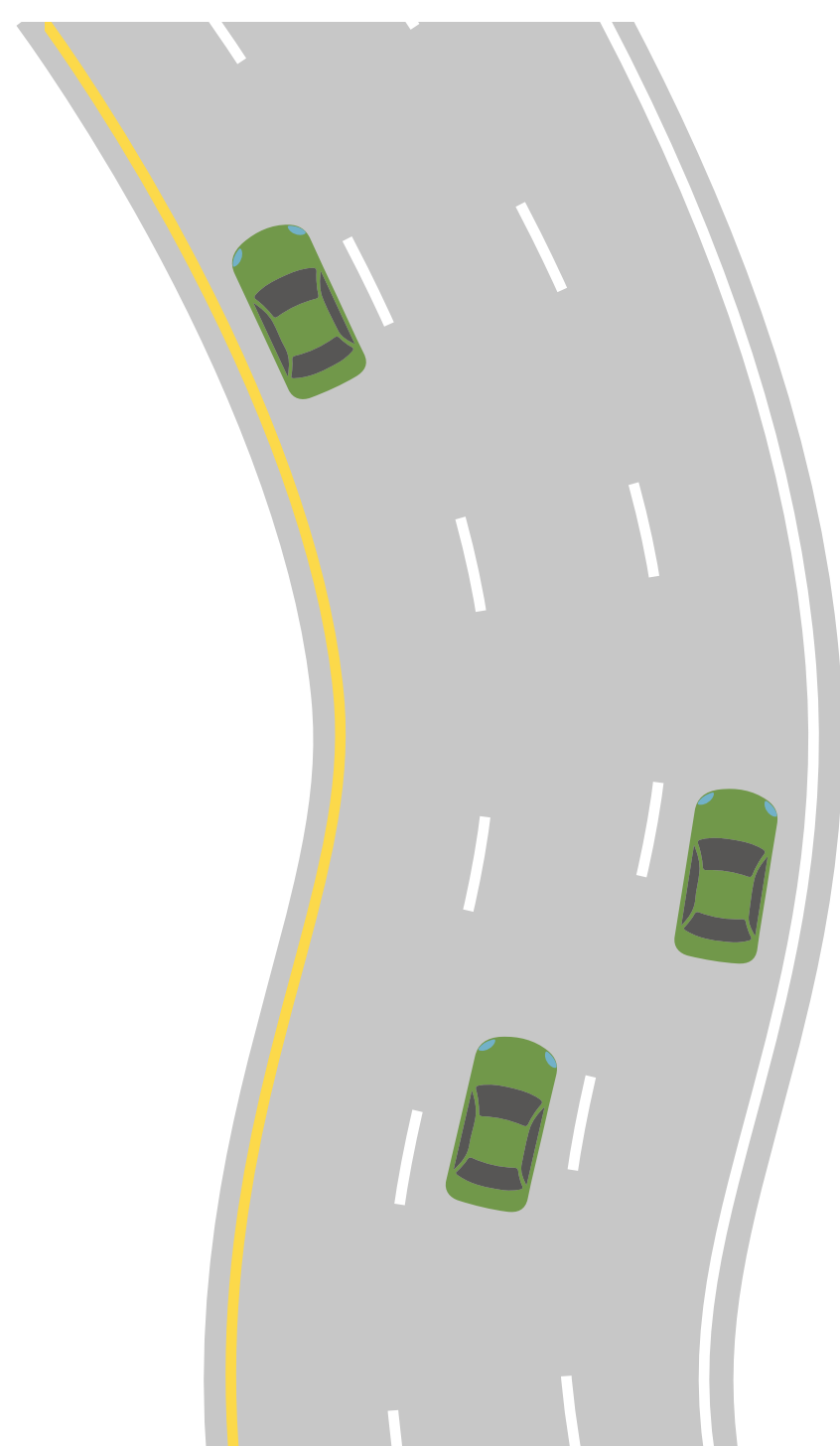


SAFETY IMPROVEMENTS



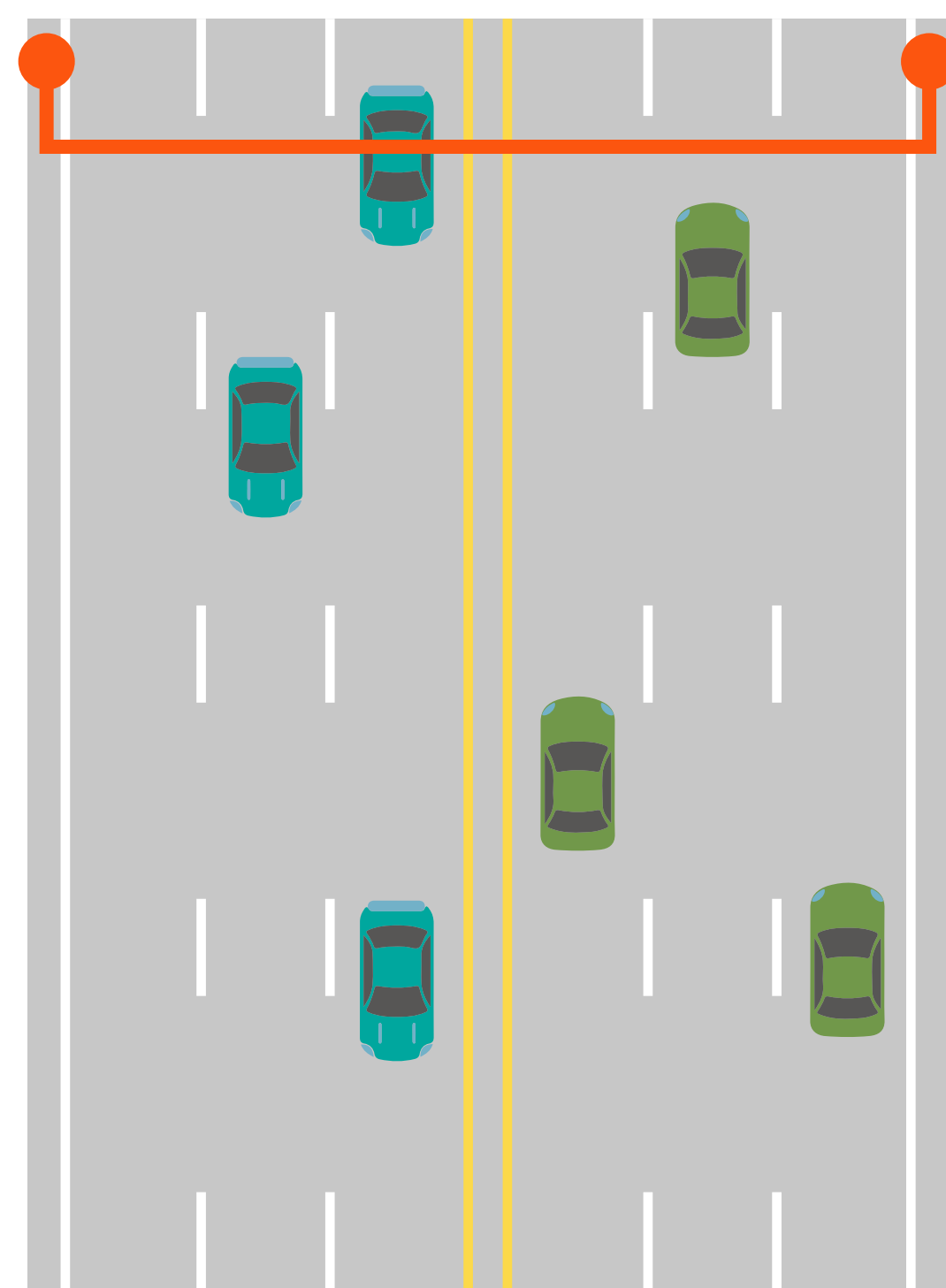
CURVES

Upgraded ramp horizontal and vertical curve deficiencies



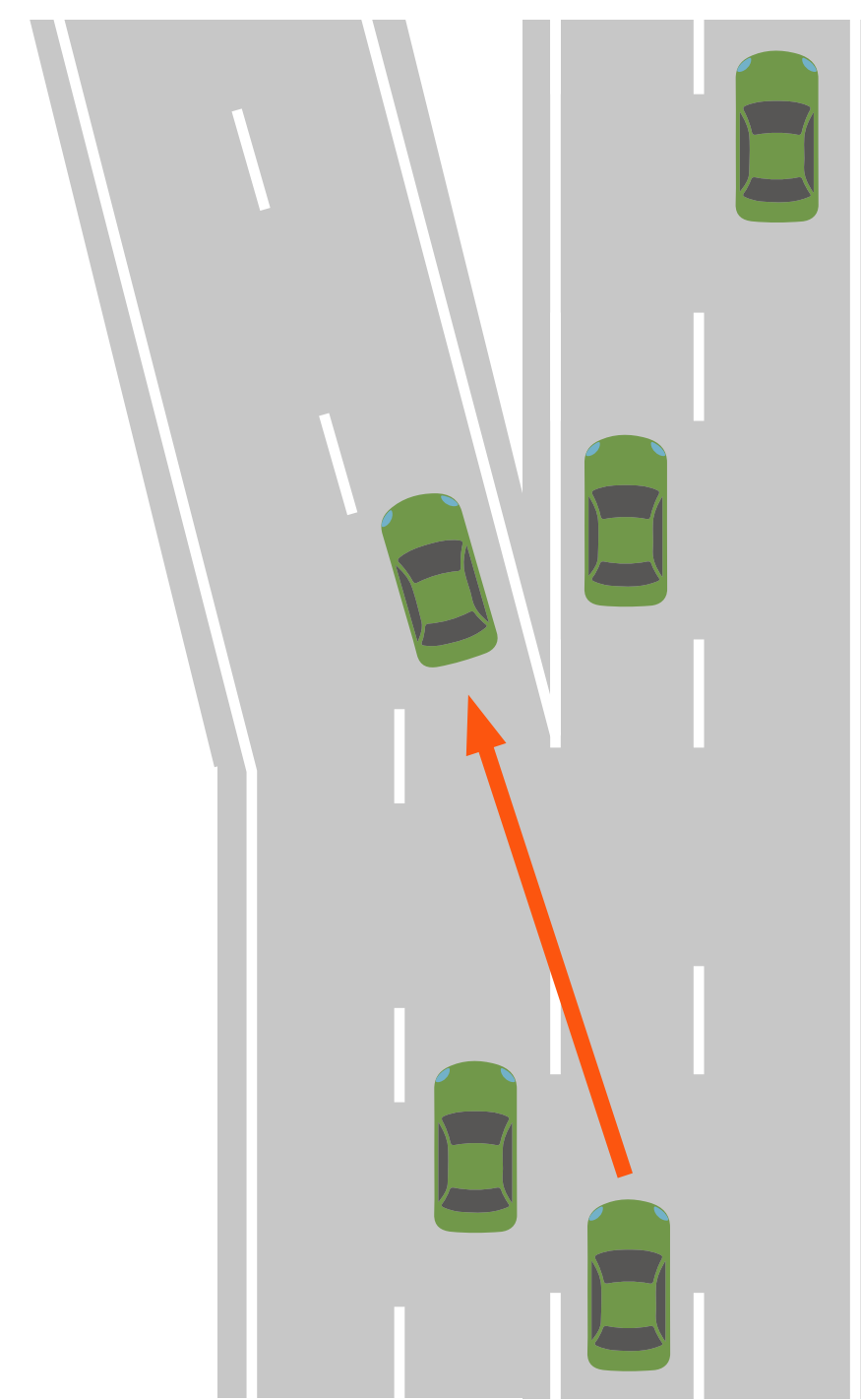
SHOULDERS

Shoulder widths widened to 10 feet or greater



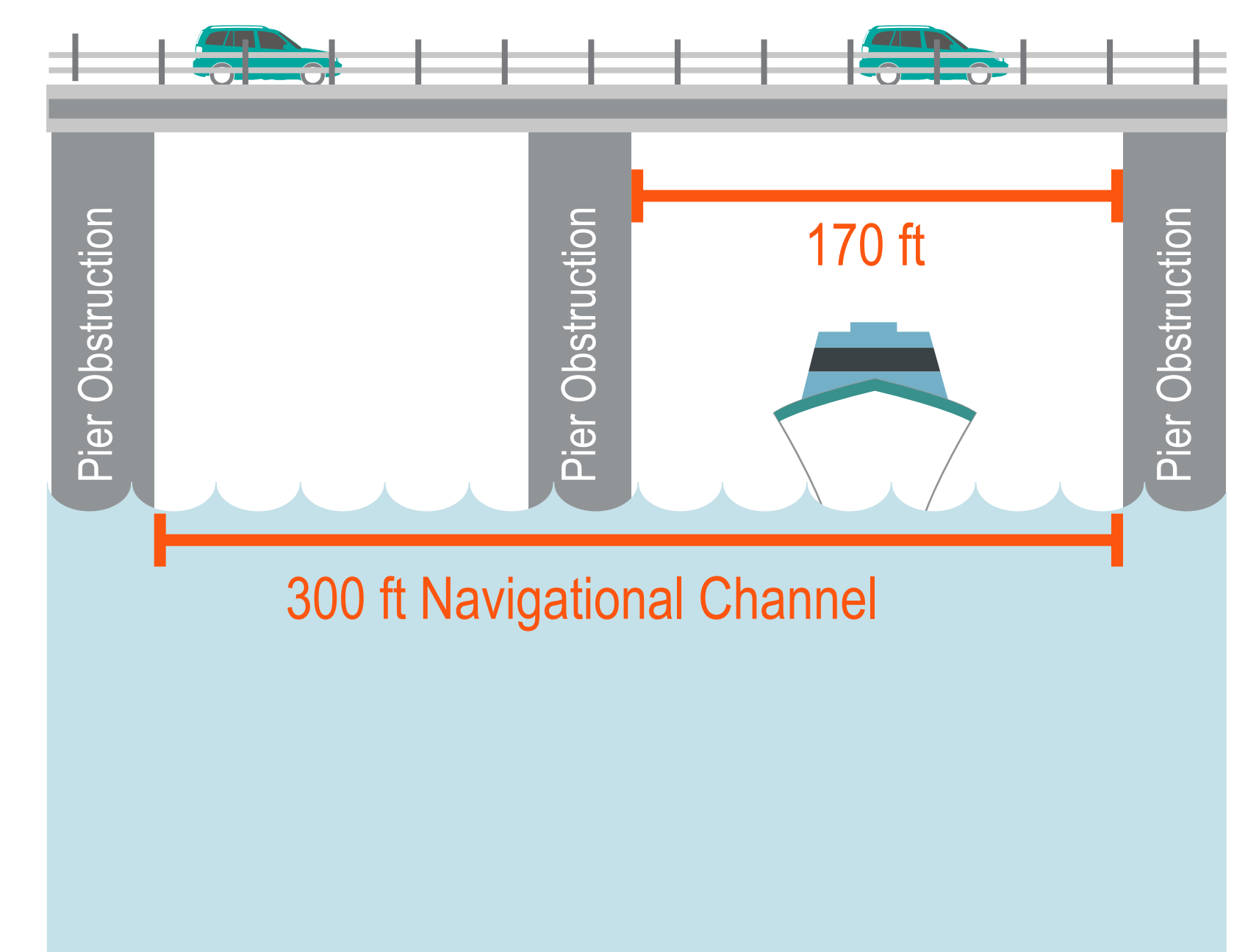
LEFT EXITS

Left exits on I-40 redesigned as right exits to reduce weaving issues



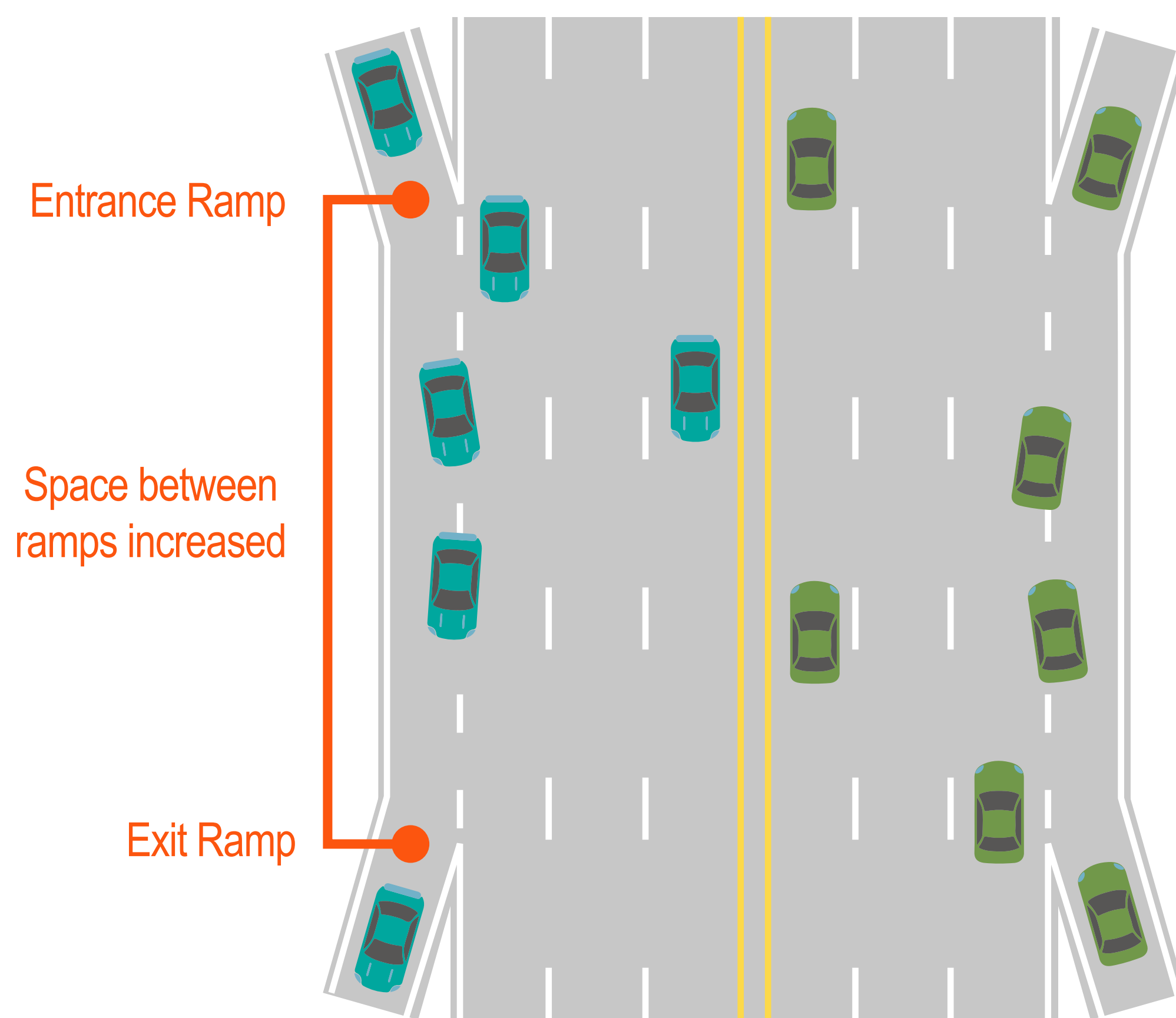
RIVER NAVIGATION

Pier obstructions in navigational channel under I-30 will be removed



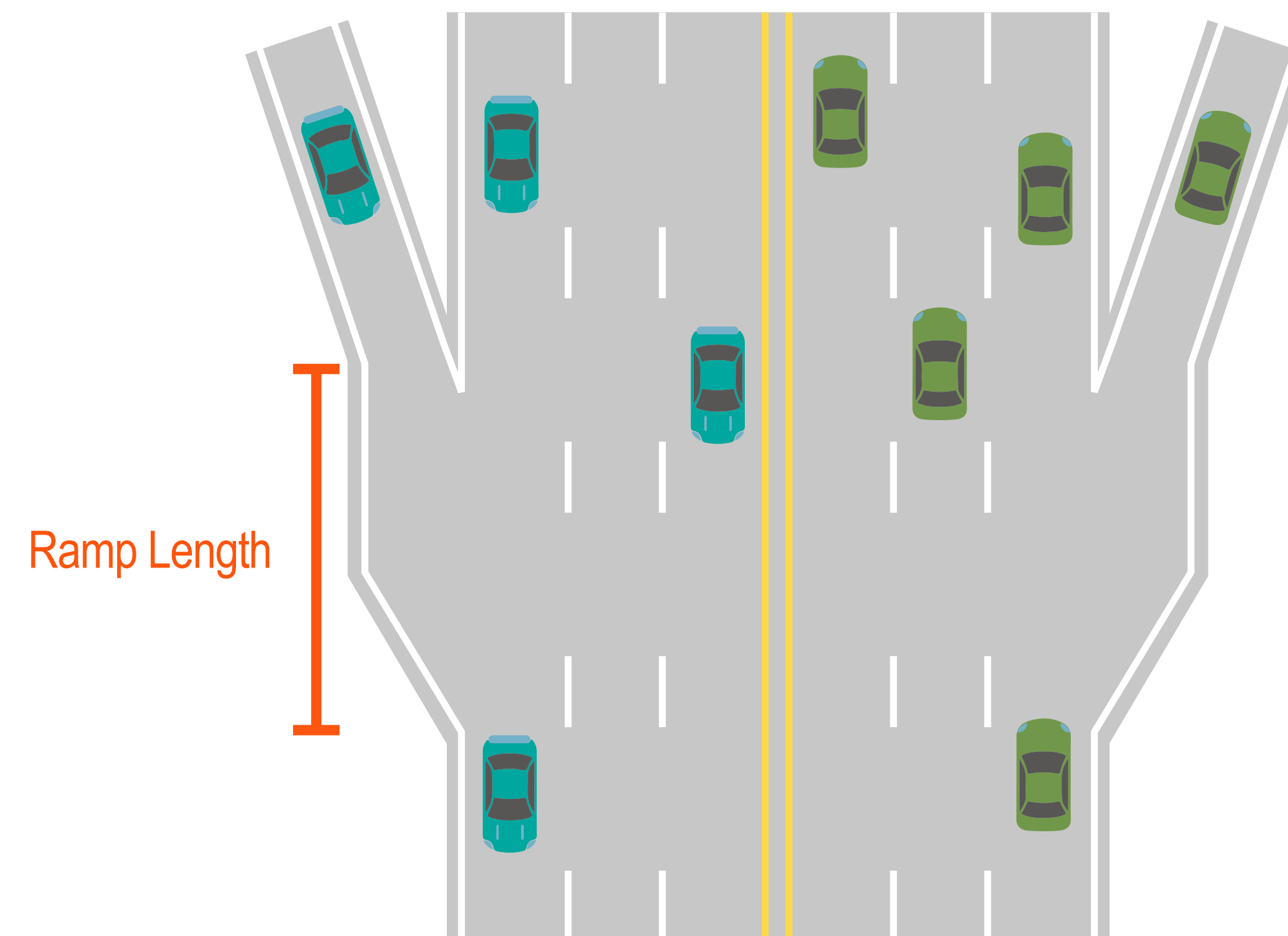
RAMP SPACING

Spacing improved to safely allow weaving between entrance/exit ramps (see table to the right)



RAMP LENGTH

Ramps lengthened to allow longer acceleration/deceleration (see table to the right)



EXISTING	RAMP MODIFICATION	ACCESS CHANGE	DESCRIPTION
NB I-30 exit to Roosevelt Road	Ramp improvement	No change	The ramp would be lengthened, prohibiting drivers from directly accessing eastbound 28th Street. Drivers must turn east on Roosevelt Road and south on Vance Street to reach 28th Street.
SB entrance from Roosevelt Road	Ramp improvement	No change	Ramp lengthened
NB entrance from Roosevelt Road	Ramp improvement	No change	Ramp lengthened
SB exit to Roosevelt Road	Ramp improvement	No change	Ramp lengthened
NB exit to Broadway Street	Ramp improvement	No change	Ramp lengthened
SB entrance from Broadway Street	Ramp improvement	No change	Ramp lengthened
NB entrance from Bishop Lindsey Avenue	Ramp replacement	Access shift	Ramp is replaced with a NB entrance ramp from Broadway Street
SB exit to Bishop Lindsey Avenue	Ramp improvement	No change	Ramp lengthened
NB exit to Curtis Sykes Drive	Ramp improvement	No change	Ramp lengthened
SB entrance from Curtis Sykes Drive	Ramp removal	Access shift	Ramp is removed and replaced with a SB entrance from 18th/19th Street
NB entrance from Curtis Sykes Drive	Ramp removal	Access shift	EB I-40 can be accessed by proposed entrance ramp from frontage road north of 19th Street. WB I-40 can be accessed by going north on Main Street to the JFK Boulevard entrance ramp to WB I-40 or by going north on N. Hills Boulevard to the N. Hills Boulevard entrance ramp to WB I-40.
SB exit to Curtis Sykes Drive	Ramp replacement	Access shift	Ramp is replaced with a proposed 18th Street/ 19th Street/ Curtis Sykes Drive exit
WB I-40 entrance from SB N. Hills Boulevard	Ramp replacement	No change	WB entrance to I-40 moved to the east
WB I-40 entrance from NB N. Hills Boulevard	Ramp replacement	Access shift	Drivers on NB N. Hills Boulevard would turn west to access WB I-40 entrance ramp (replaces existing loop)